

# AVENTUS Thrombectomy System: Case Presentation

## PATIENT PRESENTATION

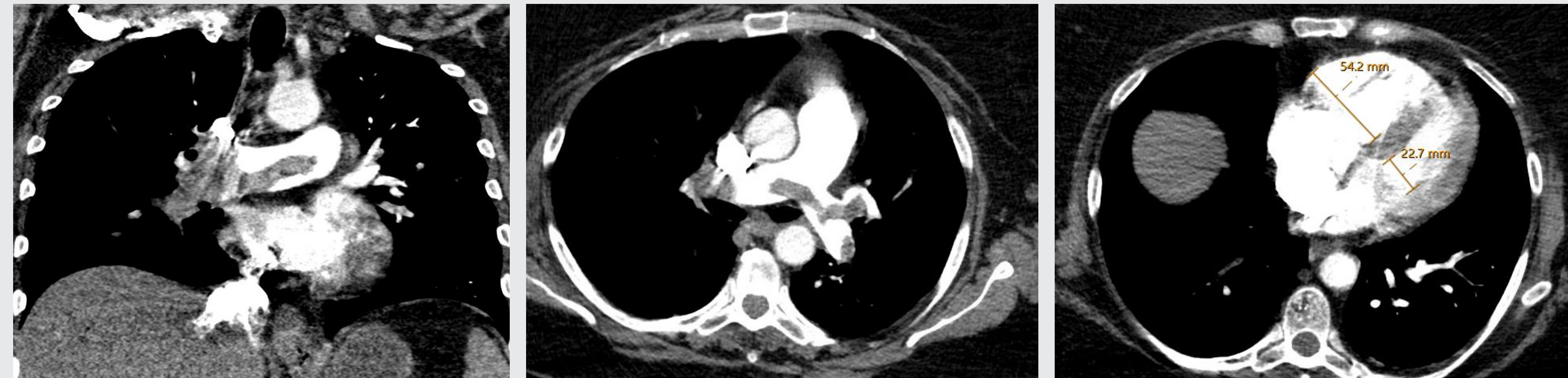
- 62-year-old female patient with:
  - 2-week duration of upper respiratory and GI symptoms.
  - Worsened shortness of breath and syncopal episode on day of presentation.
- Past medical history:
  - Provoked DVT (2011 and 2014, both treated 3 months)
  - Diabetes mellitus type 2

## OBJECTIVE FINDINGS

Vitals	
Blood pressure	132/63 mmHg
Heart rate	106 bpm
Respiratory rate	24 breaths/min
SpO <sub>2</sub>	93% on 4LNC
Labs	
Hemoglobin	12.9 g/dL
Creatinine	0.96 mg/dL
High sensitivity troponin	690 ng/mL
Blood natriuretic peptide	58 pg/mL
Lactate	2.8 mmol/L
Risk Scores	
PESI	102 (class III)
ESC	Intermediate-high

## IMAGING

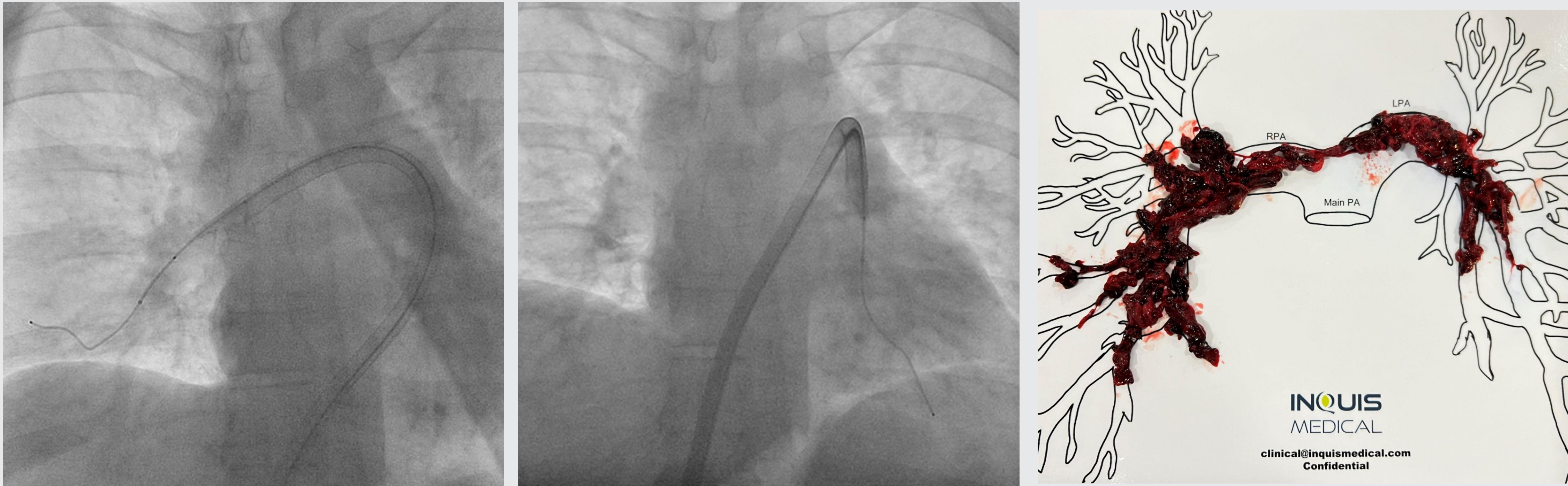
Index Computed Tomography Pulmonary Artery (CTPA)



Saddle pulmonary embolism, with obstructive flow to right pulmonary artery (PA).

Right ventricle to left ventricle (RV/LV) ratio 2.39.

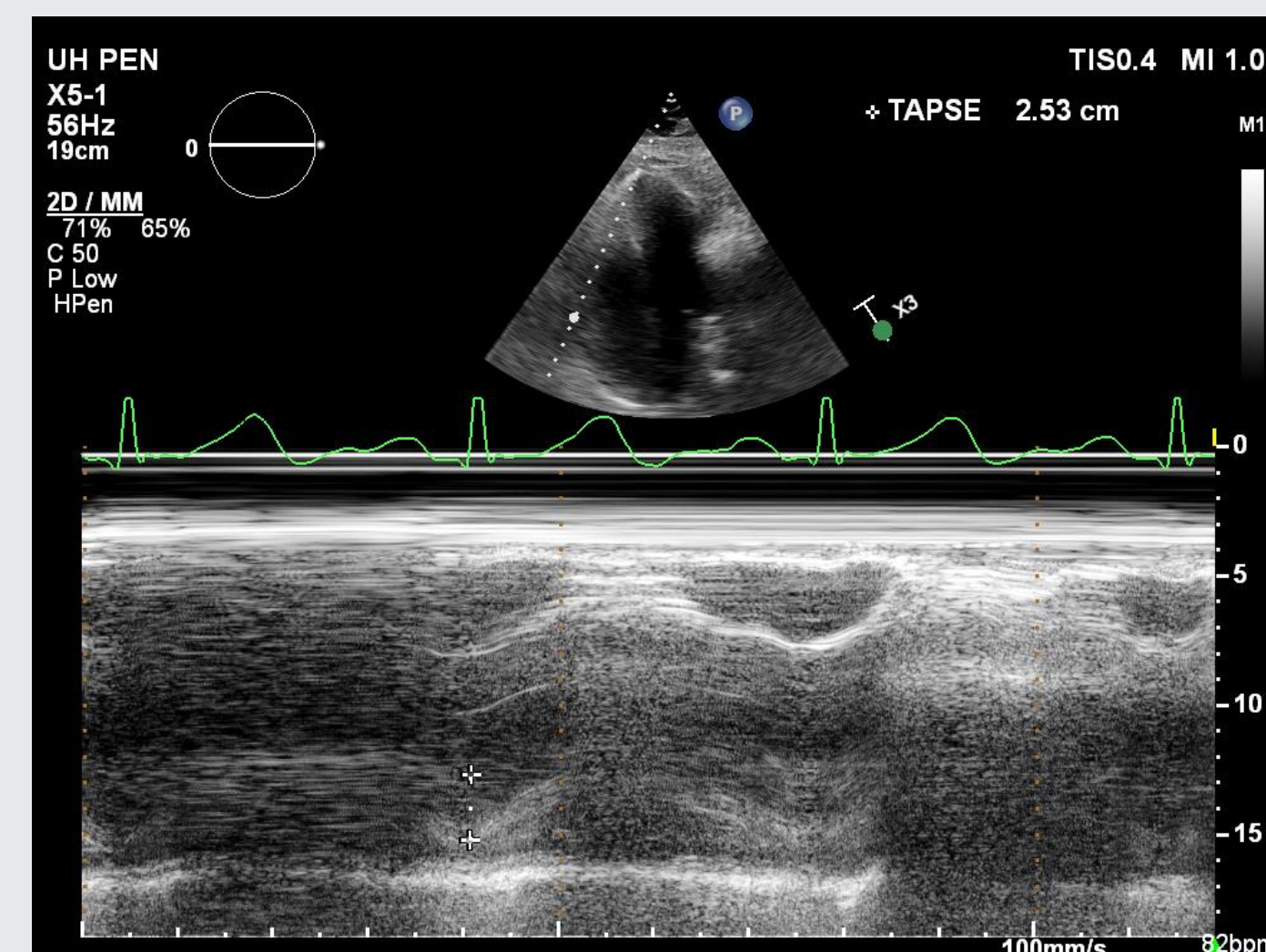
AVENTUS Thrombectomy



Thrombectomy of right and left PA over Supracore wire and Trailblazer support catheter.

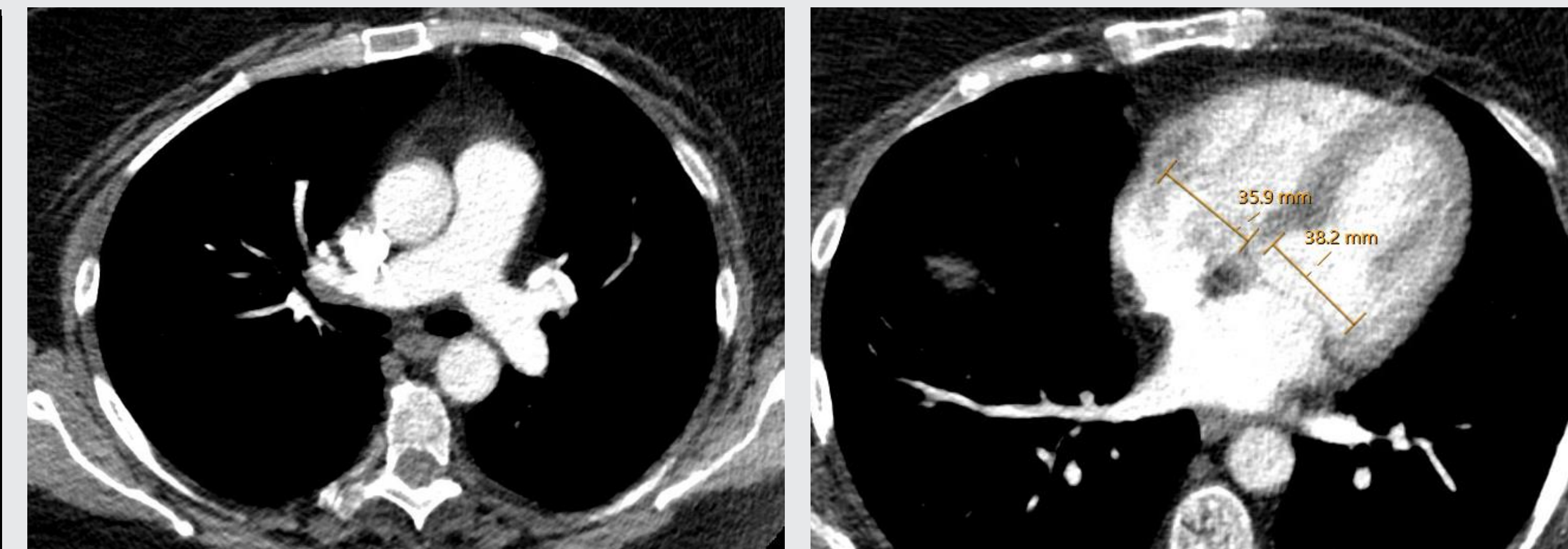
Clot retrieval.

24-hour Post Echocardiogram



Right ventricular size and function normalized. S' 16 cm/s (not shown).

48-hour Post CTPA (study protocol)



Improvement in thrombus burden.

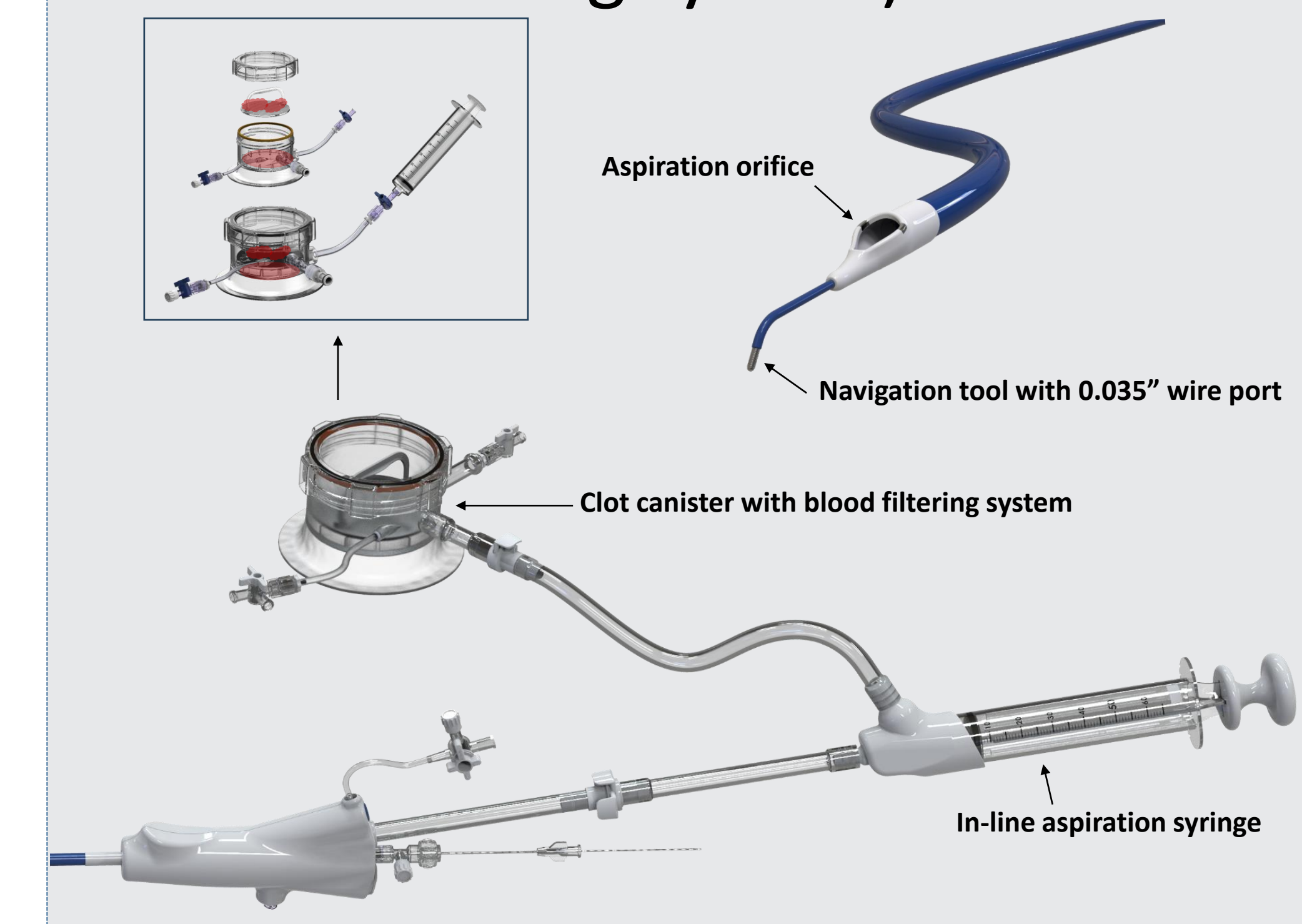
RV/LV ratio 0.94.

## HEMODYNAMICS

	Pre	Post
Right atrial pressure (mmHg)	20	15
PA pressure (mmHg)	60/24 (36)	30/20 (23)
Mixed venous saturation	51%	67%
Cardiac output	4.5	5.9
Cardiac index	1.9	2.5

## AVENTUS THROMBECTOMY

- Fully integrated thrombectomy system with dilator, navigation, aspiration, and blood return system.
- Improvement on ease of use (minimize exchanges of wire/catheter, on-table in-line blood filtering system).



## IDE TRIAL

- Enrollment goal of 120 patients in 35 US sites.
- Clinical trials NCT05907564.